



INSTALLATION GUIDE OF THE SOUND 6TEM

COMPATIBLE

*Citroën AMI
Opel Rocks-e
Fiat Topolino*

**SOUND
6TEM**

CONNECT, VIBE, LISTEN !

Find here the assembly
instructions to enjoy a
unique sound experience
in your car.



Prefer to follow the video tutorial?
Scan the QR code!



SUMMARY

Kit contents _____ 5

How to install the system _____ 6

- 1 Installation of the electronic box
- 2 Installation of the exciters
- 3 Installation of the trim pieces
- 4 Installation of the cable clips
- 5 Connection of the wiring looms

Connect _____ 24

SAFETY INSTRUCTIONS AND INSTALLATION PRECAUTIONS

Before installation and use, please read and follow all instructions in the guide to ensure safety and proper operation.

- Electrical hazards: Connections must be made only according to the provided diagrams. Before any work, ensure the vehicle is switched off (battery disconnected) to prevent any risk of short circuit, electric shock, or damage to the vehicle's electronic systems. Verify that all connections are clean, secure, and insulated to comply with applicable safety standards.
- Installation: Follow the instructions. Do not modify any of the kit components. The SOUND 6TEM must be securely mounted, as designed, to minimize the risk of accidental projection while driving. The installation must not interfere with the driver's field of vision or the operation of the vehicle's safety equipment.
- Precautions for the bond of the adhesive parts: Press firmly and maintain pressure for 30 seconds for a functional bond. Do not perform the bonding steps on cold and/or damp surfaces; if necessary, warm the surfaces with a hairdryer. Wait 1 hour before using the SOUND 6TEM after the installation to ensure the exciters are properly attached.
- Operating conditions: Although rated IP34 (resistant to splashing water), the unit must not be exposed to direct water jets or immersion. Do not exceed the maximum operating temperature of 60°C / 140 °F. If smoke, abnormal odor, or overheating occurs, discontinue use immediately.

MAINTENANCE

The kit does not require regular maintenance. To clean, ensure the device is completely switched off. Use a soft, dry cloth to wipe the housings and connection surfaces. Never use solvents, abrasive chemicals, or liquids. Simply visually inspect the cables and connectors for any wear or corrosion. If in doubt, contact our customer service.

GUARANTEE

This product is covered by a two (2) year limited guarantee from the date of purchase, covering the materials or manufacturing defects. The guarantee does not cover: damage resulting from improper installation, negligence, misuse, or unauthorized modifications. Failure to follow the instructions detailed in this manual will immediately cancel this guarantee.

TECHNICAL INFORMATION

SOUND 6TEM - Product reference : IMA01

Compatible with Citroën AMI / Opel Rocks-e / Fiat Topolino (glass roof versions)

General and audio specifications

- Frequency response: 30Hz-16kHz
- Stereo
- Output power: 2*15W
- Power Amplifiers (Watts, class type, etc.): Class D (2*15W)
- Maximum operating temperature : 60°C / 140 °F

Power supply

- Power supply type: 12V Vehicle
- Line input voltage: NC
- Mains frequency: NC

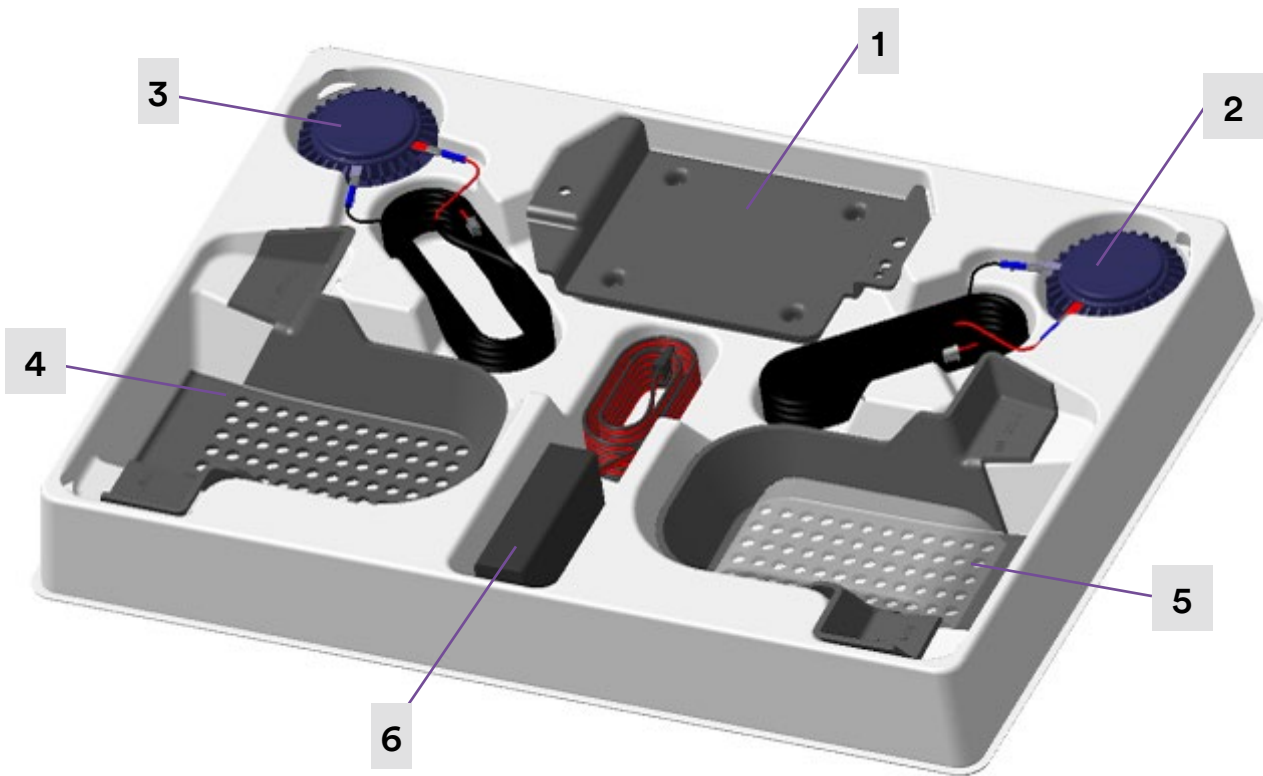
Controls and connectivity

- Wireless connectivity: Bluetooth 5.2 classic and low energy (A2DP/AVRCP/HFP/HSP/HOGP/PBAP/SPP range)
- Audio playback compatibility: Smartphones, tablets, and other compatible devices
- Microphone system: No
- Voice control service: No

Physical unit

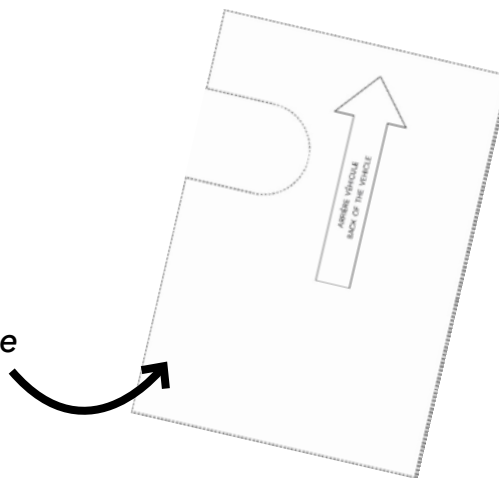
- Water resistance: IP34
- Colors: very dark carbon

SOUND 6TEM KIT CONTENTS



- [1] - Electronic box
- [2] - Exciter L (left)
- [3] - Exciter R (right)
- [4] - Trim piece
- [5] - Trim piece
- [6] - OBD connector

+ Installation template
+ Accessories bag



Accessories bag contents

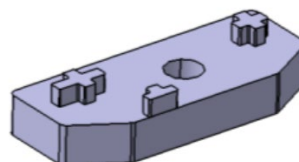
15 cable clips



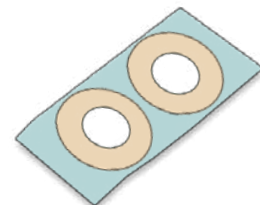
2 screws



1 adaptater

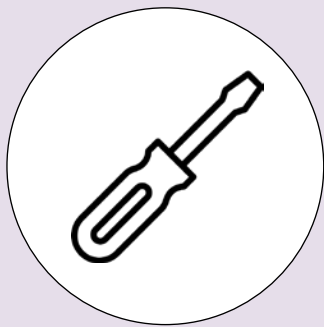


2 additional adhesives
for exciters

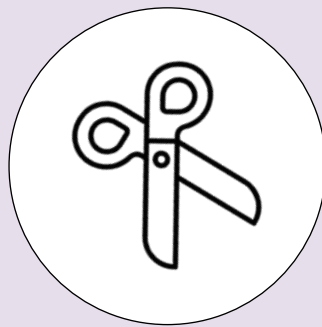


HOW TO INSTALL THE SYSTEM

You will need:



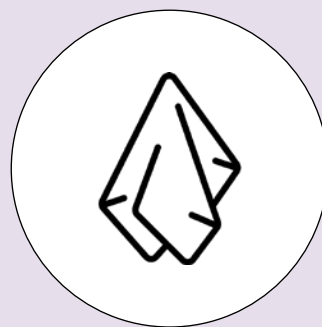
Torx screwdriver



Scissors



Degreaser such as rubbing
or isopropyl alcohol



Rag

1

Installation of the electronic box

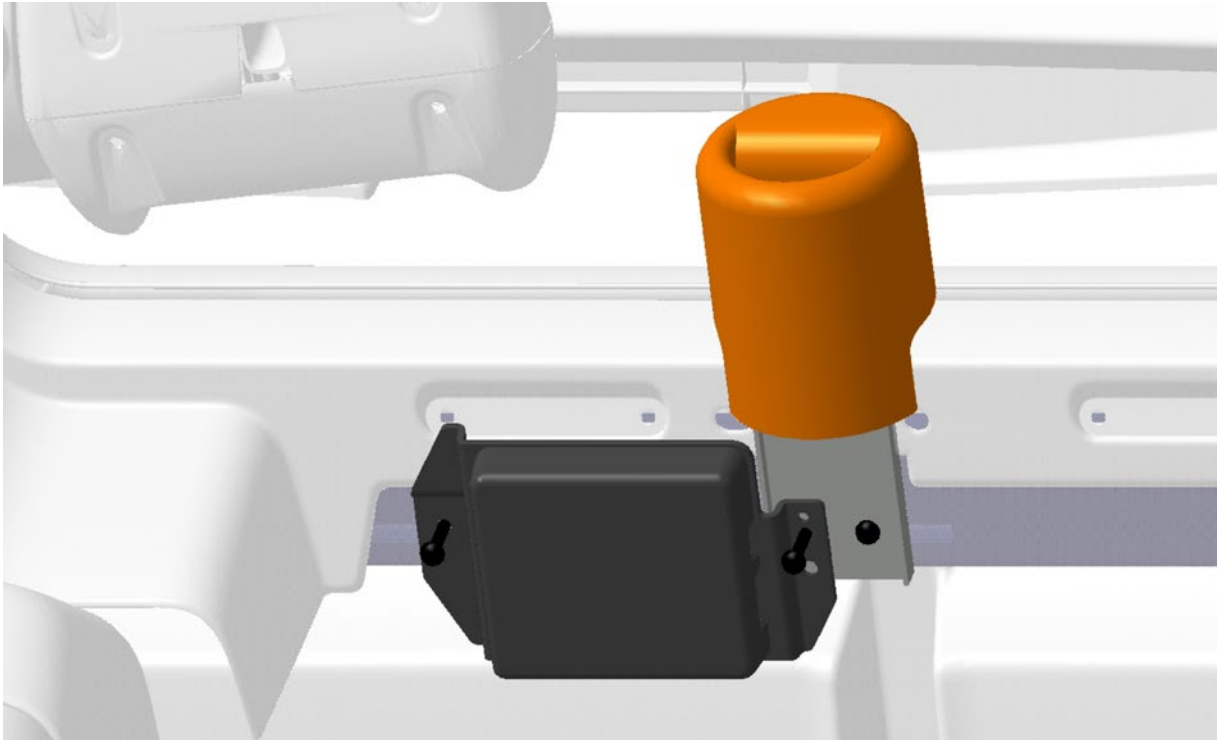


Is your car equipped with a bag hook on the dashboard?

If yes → CONFIGURATION A

If no → CONFIGURATION B

→ **CONFIGURATION A**
For cars with a bag hook



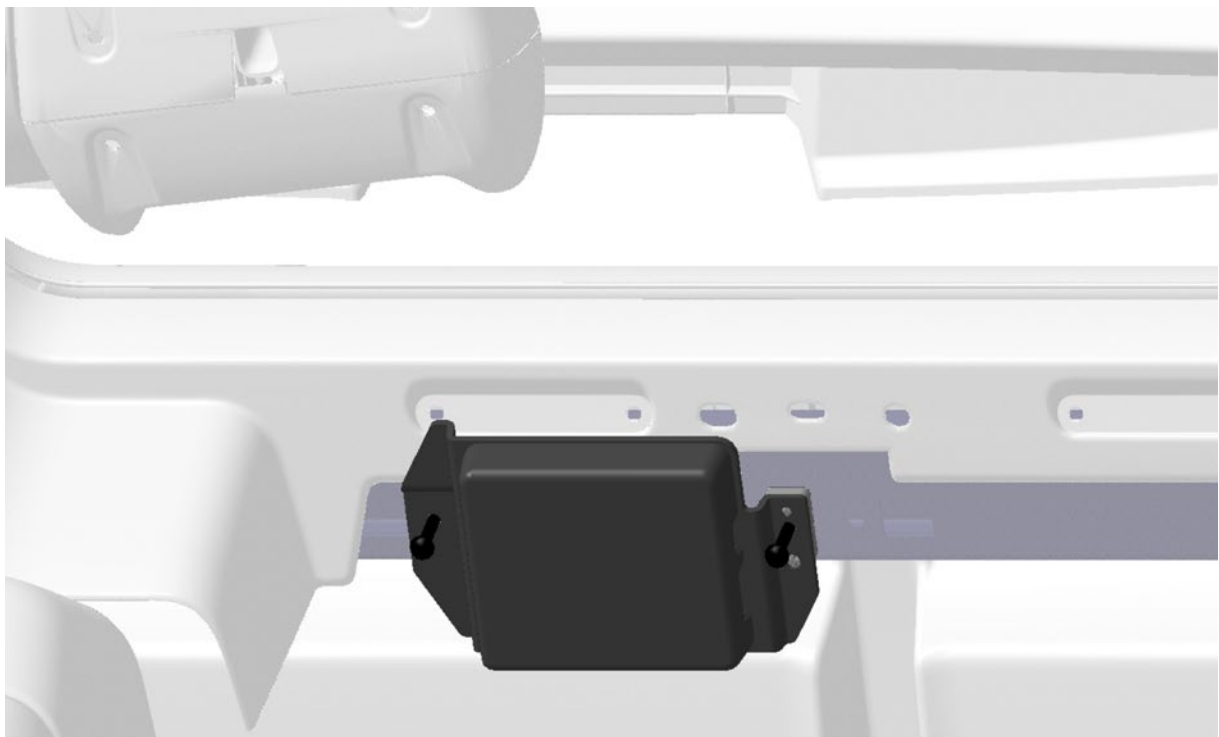
1. Unscrew the left screw of the bag hook.
2. Position the electronic box under the dashboard.
3. Reuse the screw of the bag hook (or 1 provided screw) to screw the right side of the box in the center hole.
4. Screw the other side of the box with 1 provided screw.

→ **CONFIGURATION B**
For cars without a bag hook

1. Take the adaptater from the accessories bag and position it on the electronic box.



2. Position the electronic box under the dashboard on the passenger side.
3. Screw both sides of the electronic box by using 2 provided screws.



2

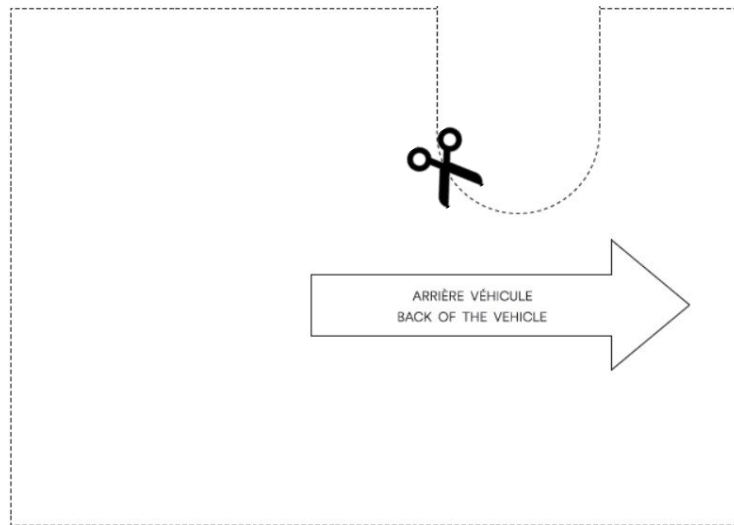
Installation of the exciters

1. **IMPORTANT !** Clean with a degreaser such as rubbing or isopropyl alcohol :
 - The overhead rails
 - The areas where the exciters will be stuck to the vehicle roof.
2. Fix 6 clips behind the overhead rails (3 clips on the driver's side, 3 clips on the passenger side) by following the instructions in the diagram below.



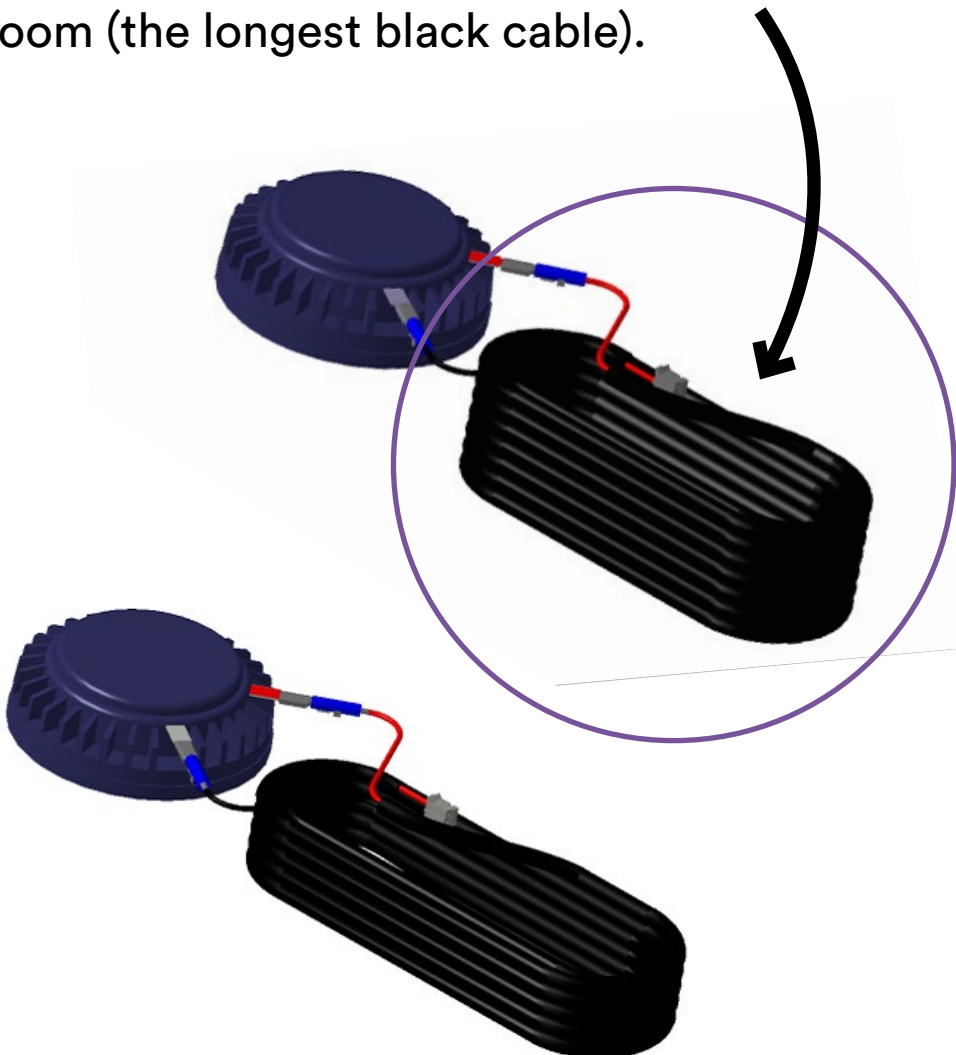
View from the bottom of the vehicle roof.

3. Cut the provided installation template.

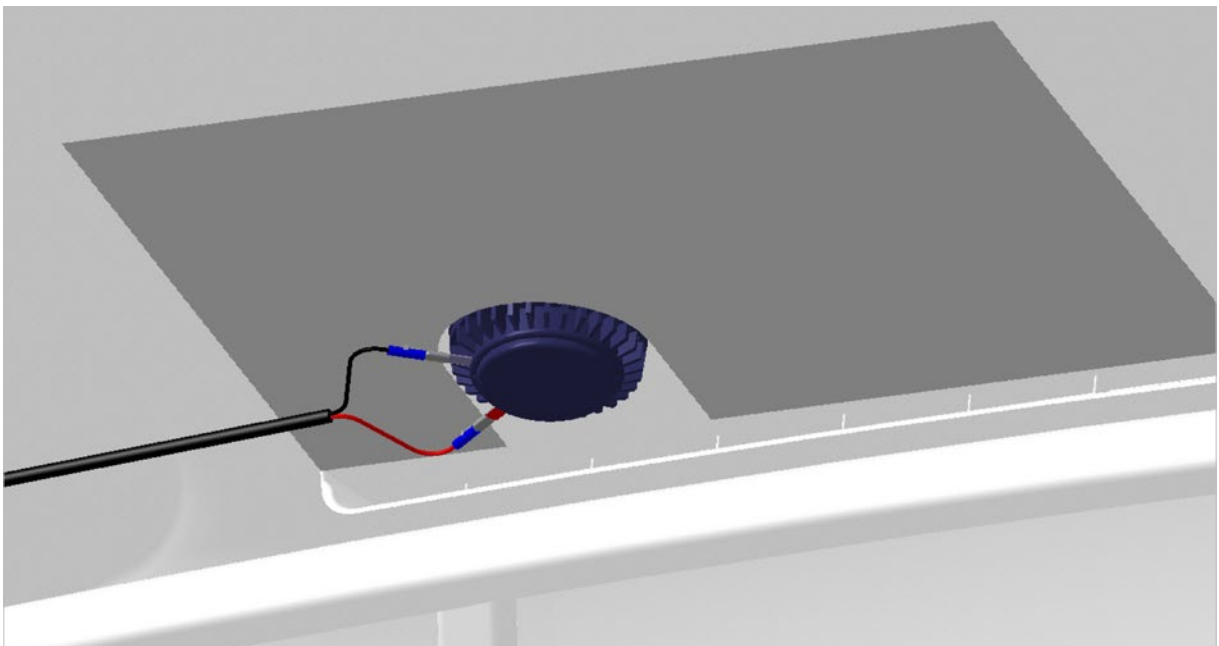
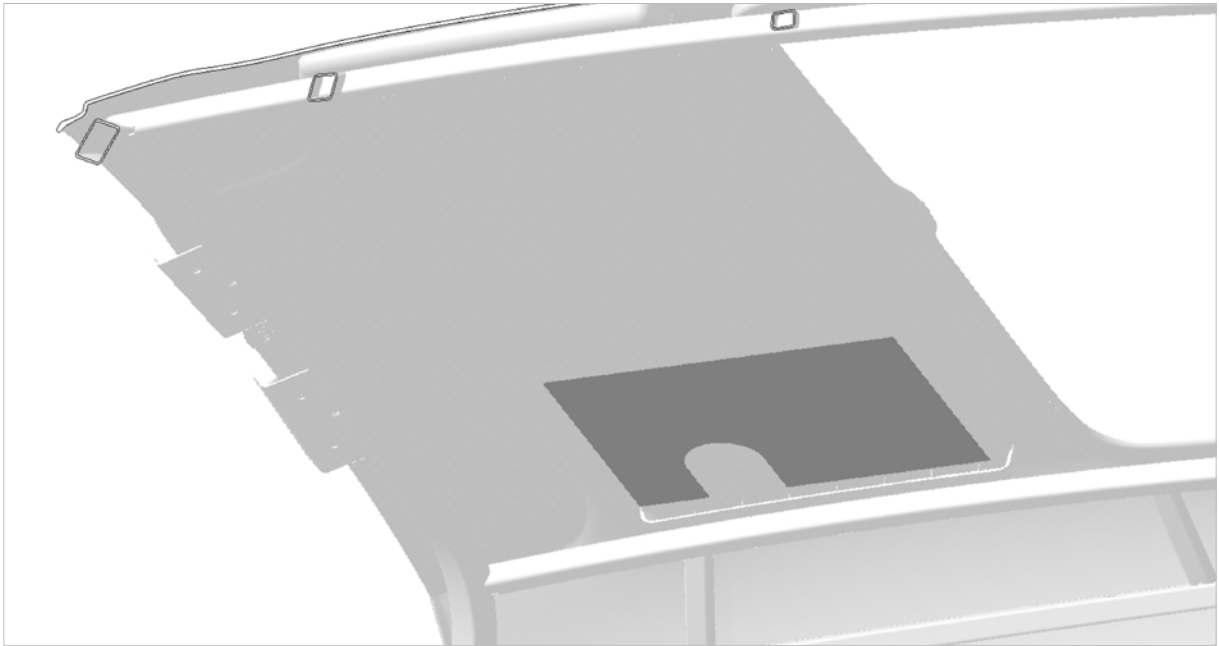


4. Begin on the driver's side.

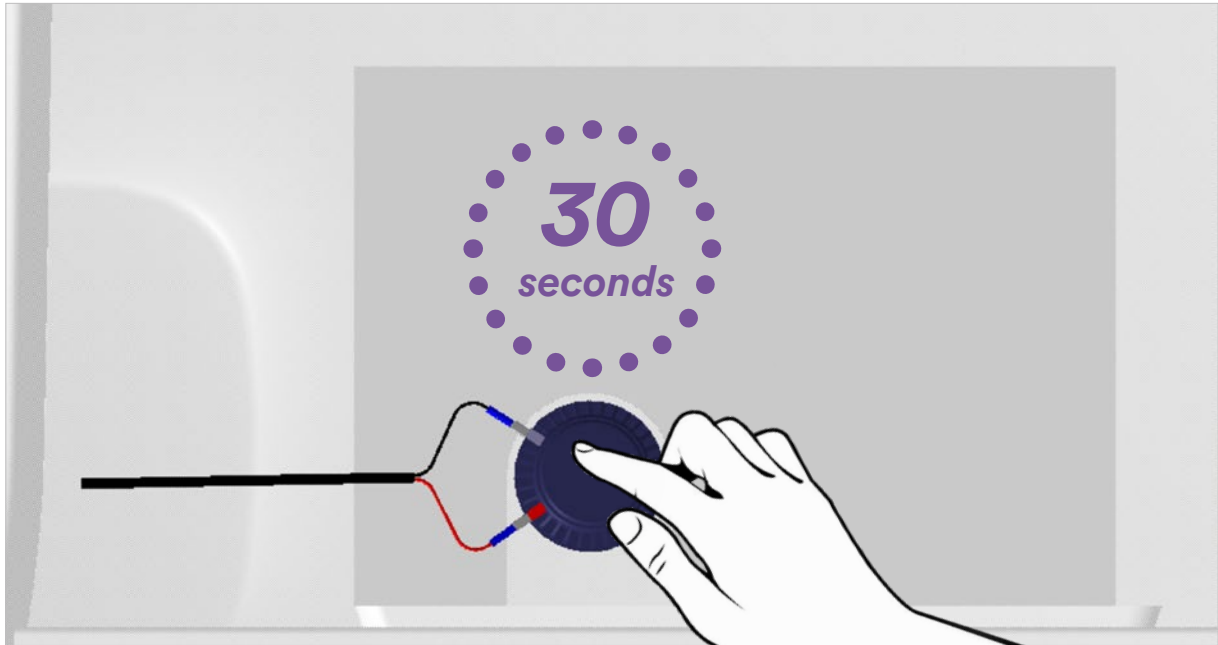
Take the exciter provided of the longest wiring loom (the longest black cable).



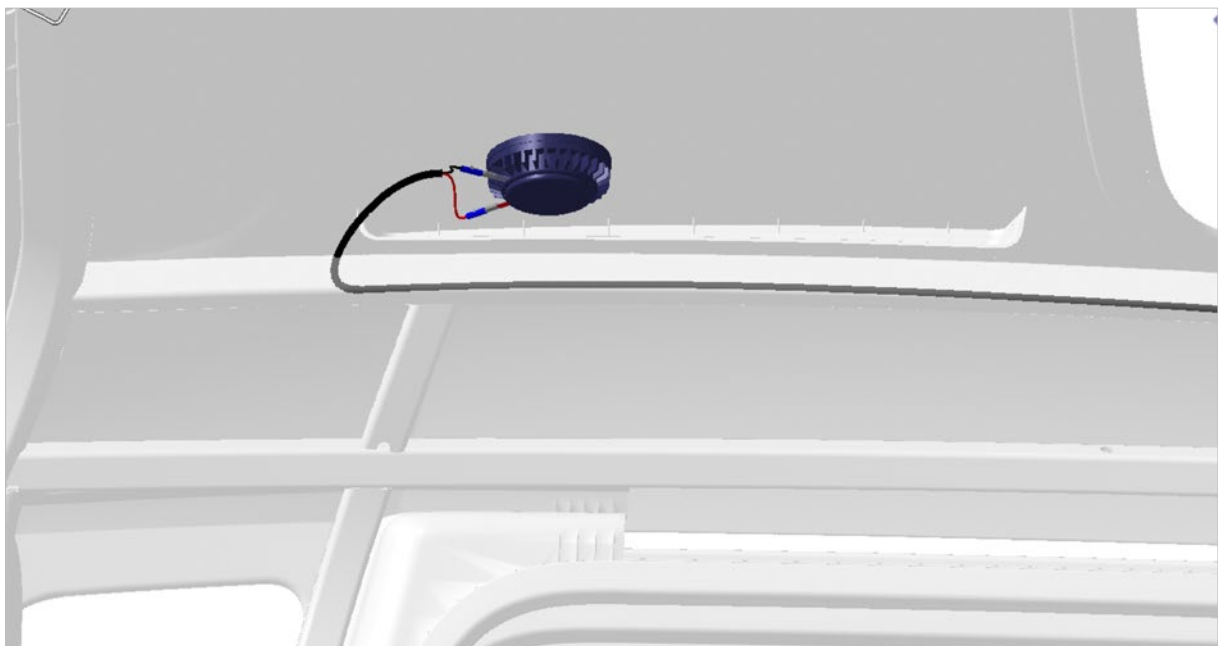
5. With the help of the installation template maintained on the pavilion like indicated below, position the exciter on the semicircle by directing the wiring loom rearward the car.



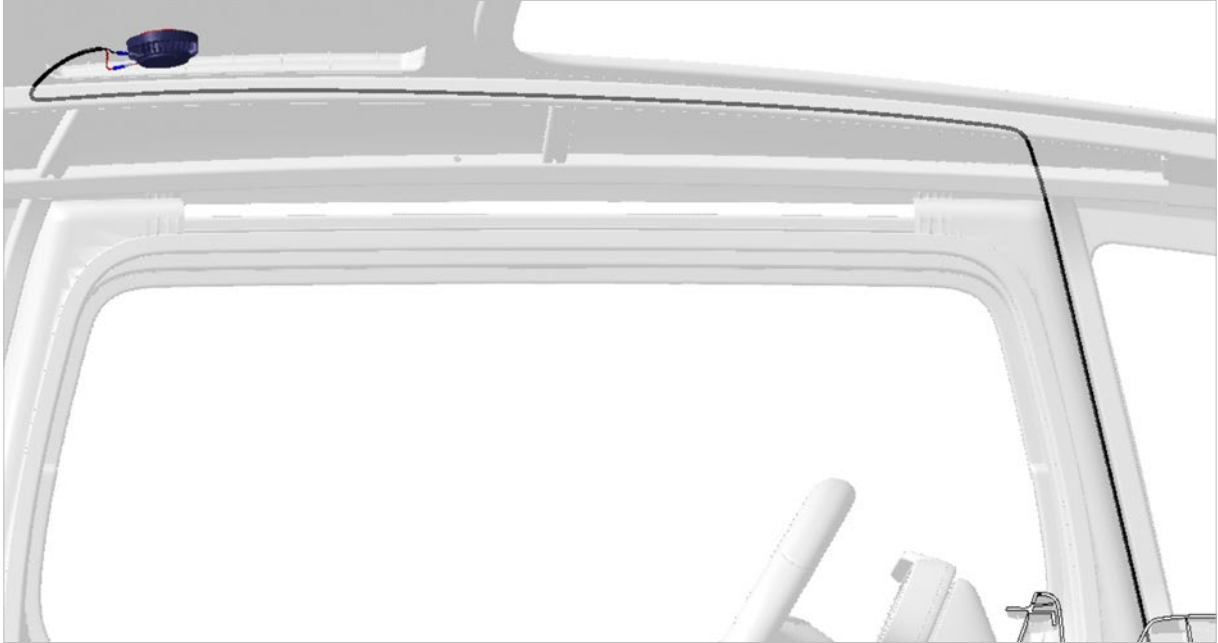
6. Press the adhesive side of the exciter on the vehicle roof during 30 seconds.



7. Unfold the entire cable. Then, pass it behind the rail through the clips and clip it to the front of the car.



8. Hide the cable between the front of the driver's door and the metallic bar to the bottom dashboard for a discreet look.



9. For the passenger side, do the same steps. Position the installation template upside down so that the drawn arrow points towards the rear of the vehicle. Then, position the exciter on the semicircle by directing the wiring loom rearward the car.
10. Press the adhesive side of the exciter on the vehicle roof during 30 seconds.



11. Unfold the entire cable. Then, pass it behind the rail through the clips and clip it to the front of the car. Finally, hide the cable.

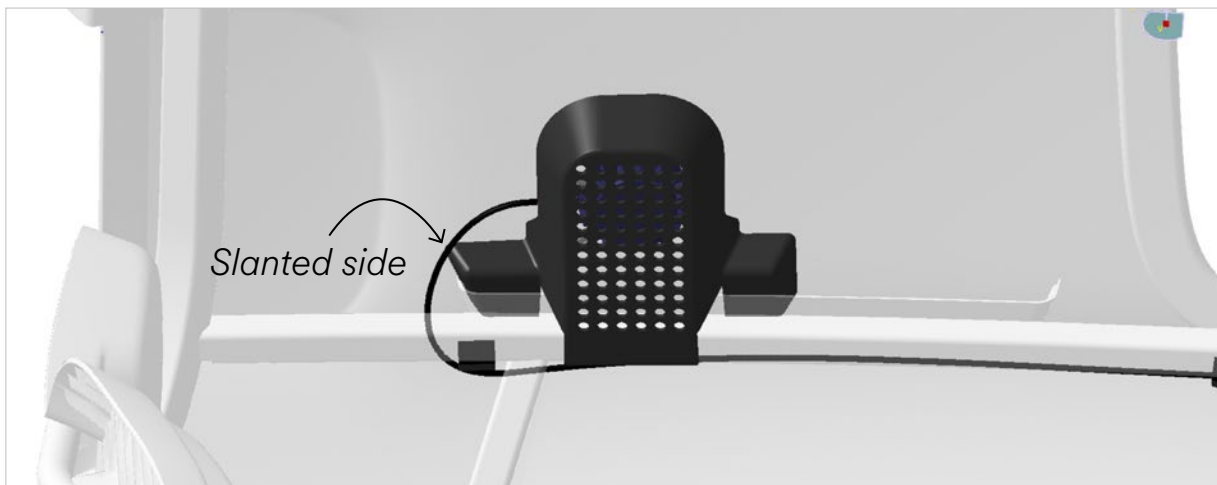


*View from the bottom of the car pavillon
with the two exciters installed.*

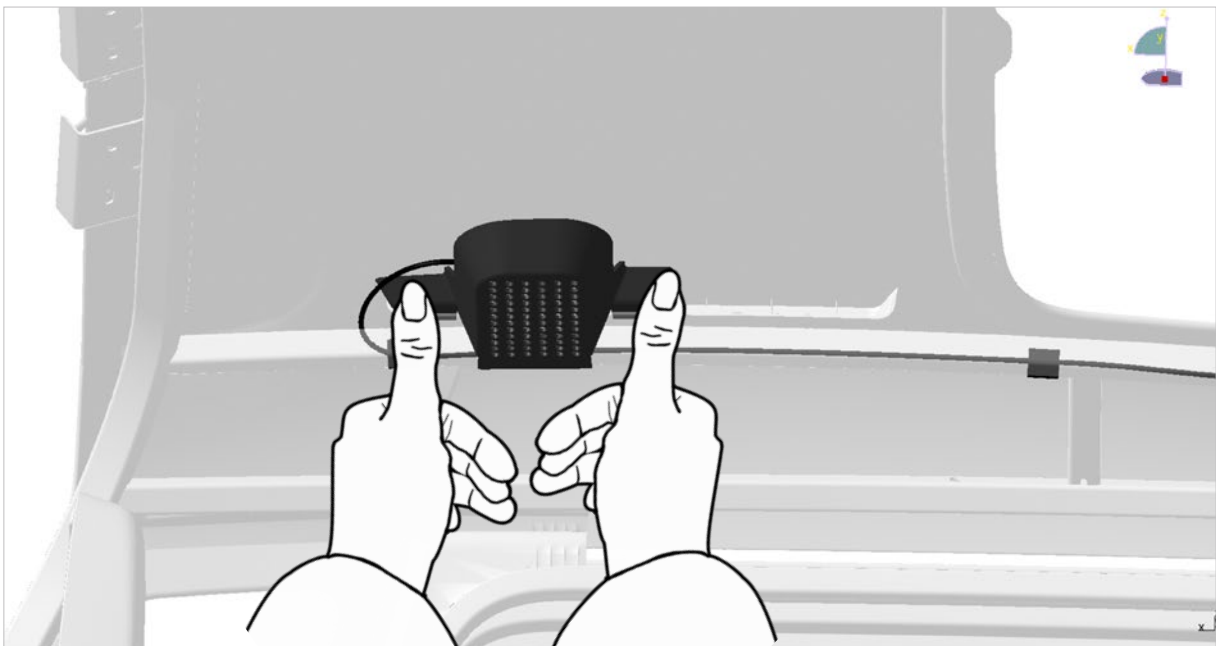
3

Installation of the trim pieces

1. Take the trims. The slanted side should face the rear of the vehicle.
2. Position the trims on their respective exciter. The «ears» must be positioned in the chute.



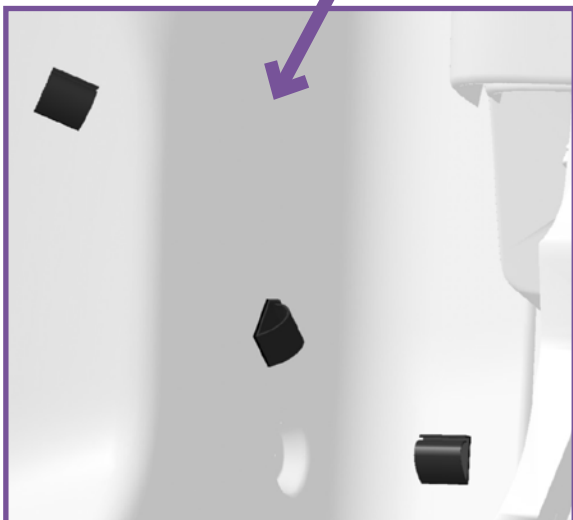
3. Clip the trims on the rail with the help of your thumbs. Check that the trim is well maintained on the rail.



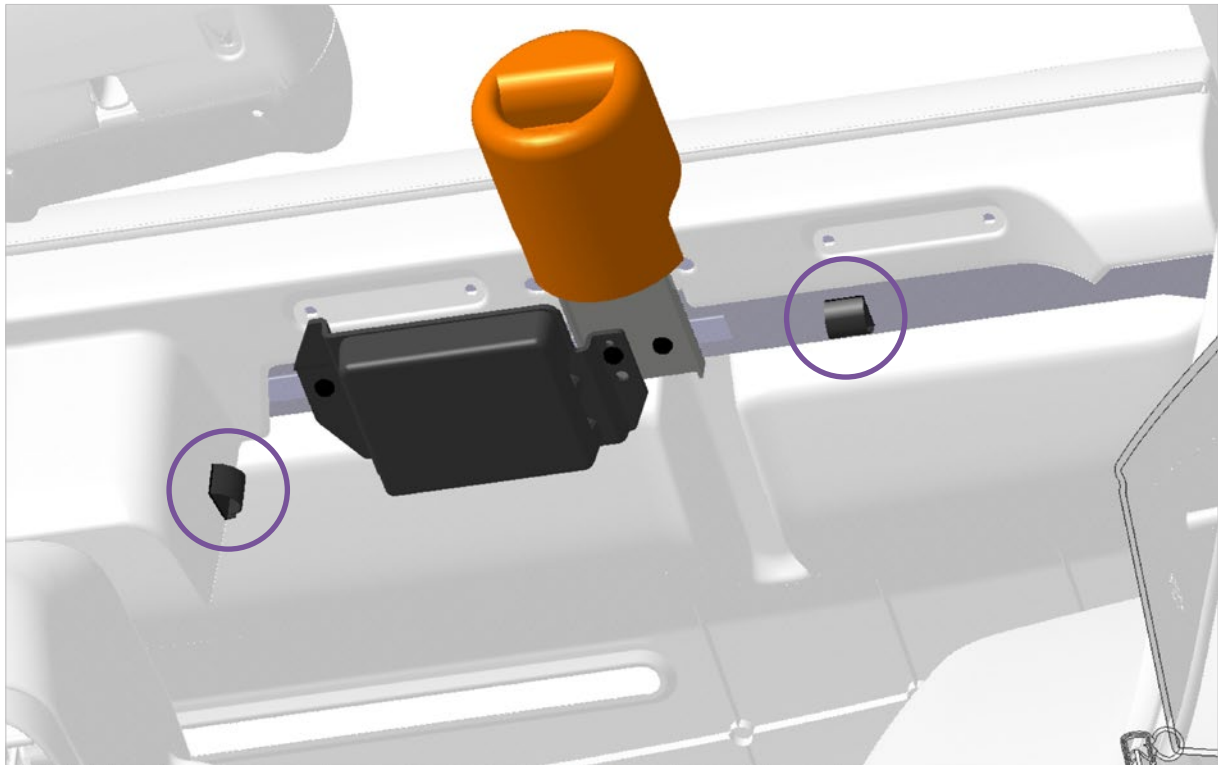
4

Installation of the cable clips under the dashboard

1. Clean with a degreaser such as rubbing or isopropyl alcohol the areas where the clips will be stuck, under the dashboard.
2. Fix 3 clips one by one in the driver's side. Then, do the same on the passenger side with 2 clips.



3. Fix 2 clips on the passenger side, near the electronic box as described.



Precision : the setup is illustrated with the version of the car with the bag hook but it is also valid for the version without.

5

Connection of the wiring looms

1. Take the OBD connector.
2. Plug it into the OBD socket located under the steering wheel at left.



3. In the pedals area, then pass the wiring looms of the left exciter and the OBD connector in the same clips and clip.
4. Carry on by passing these wiring looms behind the pedals, pressed against the plastic wall at the back, up to the passenger side.
5. Go back up through the clips to the left side of the electronic box.
6. Tidy up the wiring looms carefully.

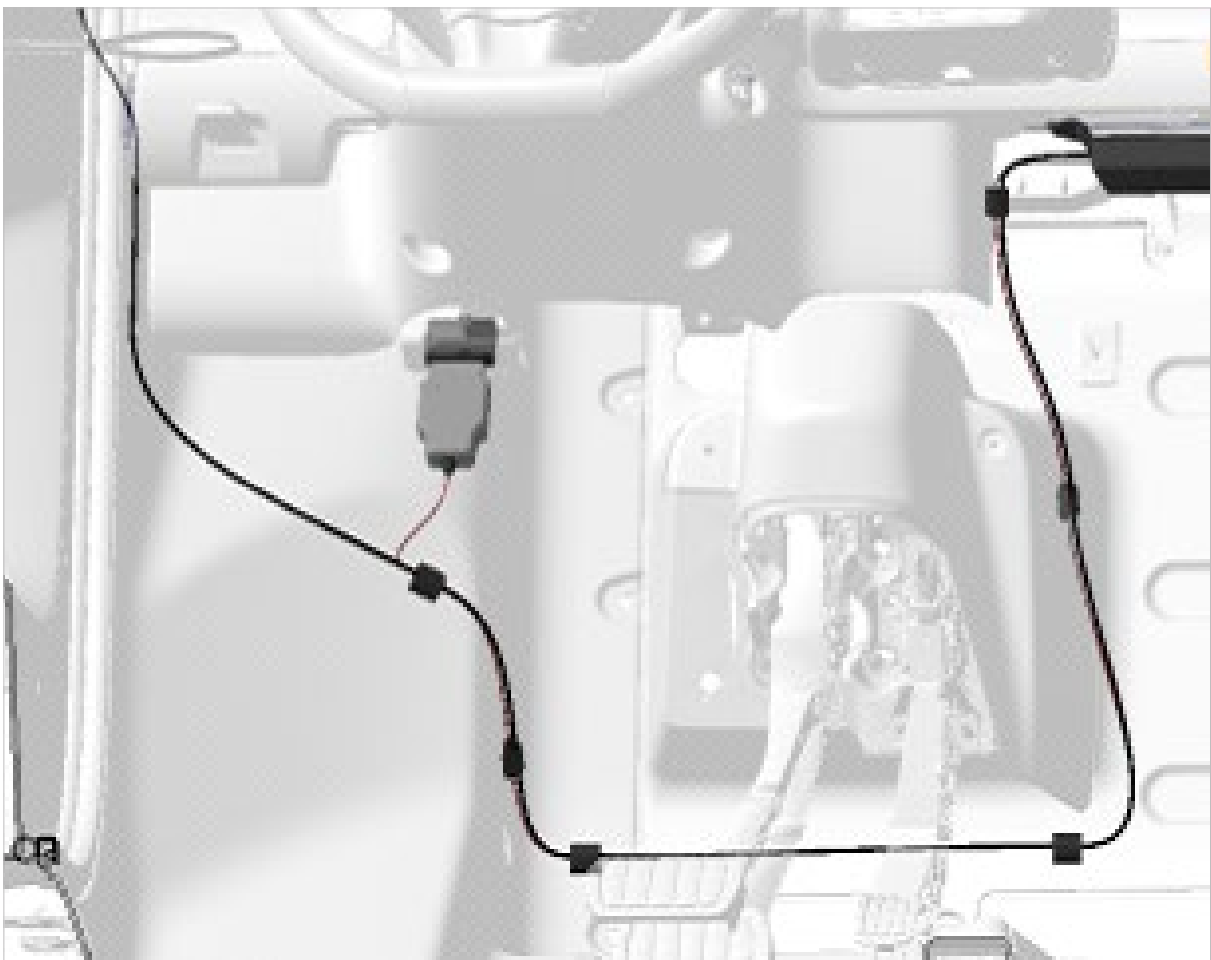
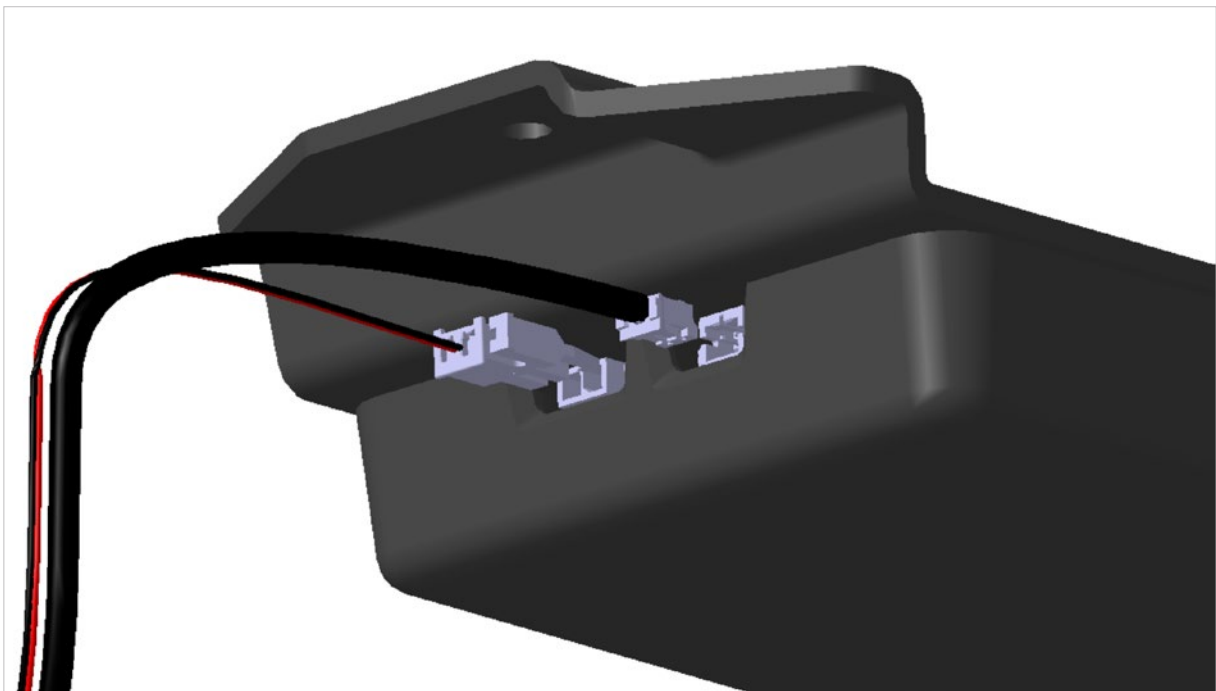
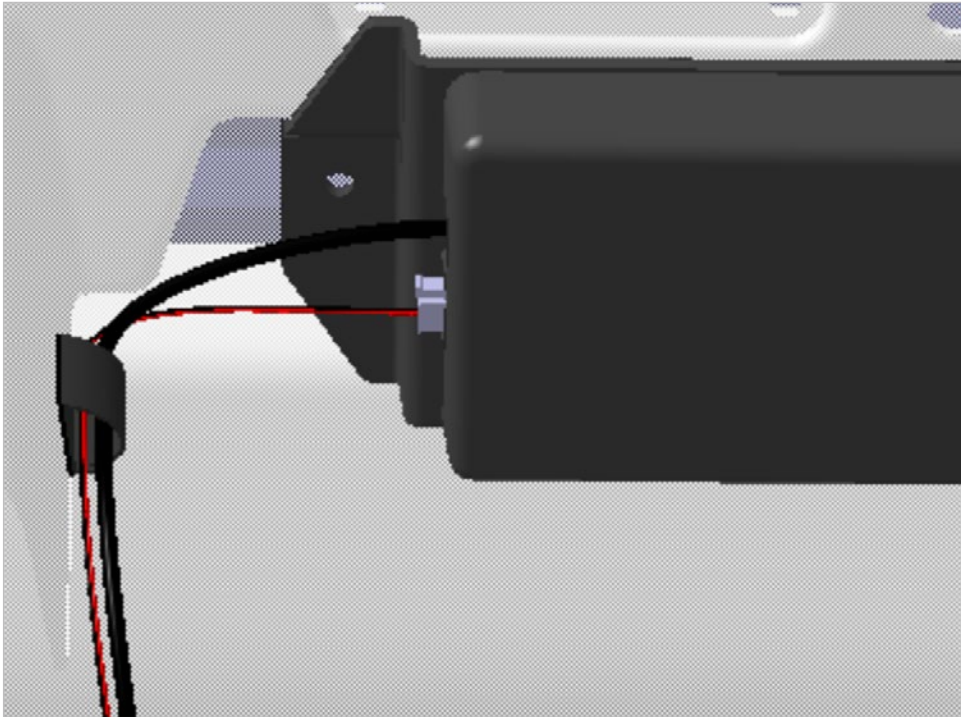


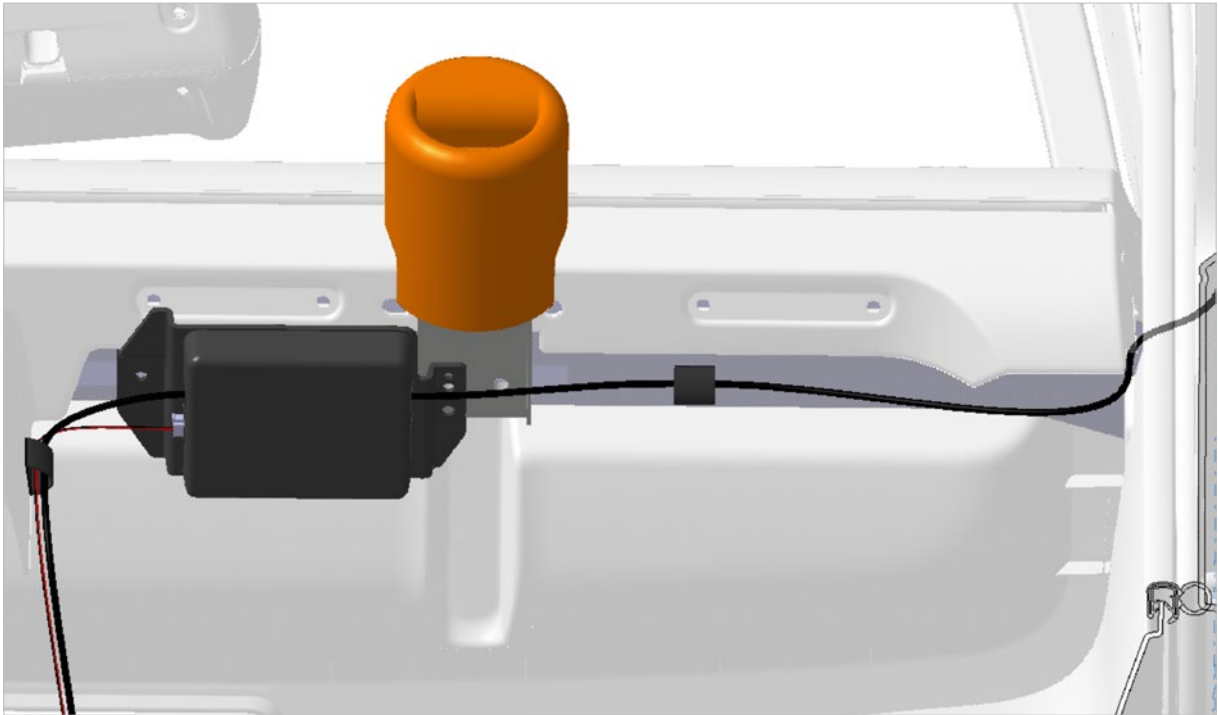
Diagram of the steps 3 to 6.

7. On the left of the electronic box :

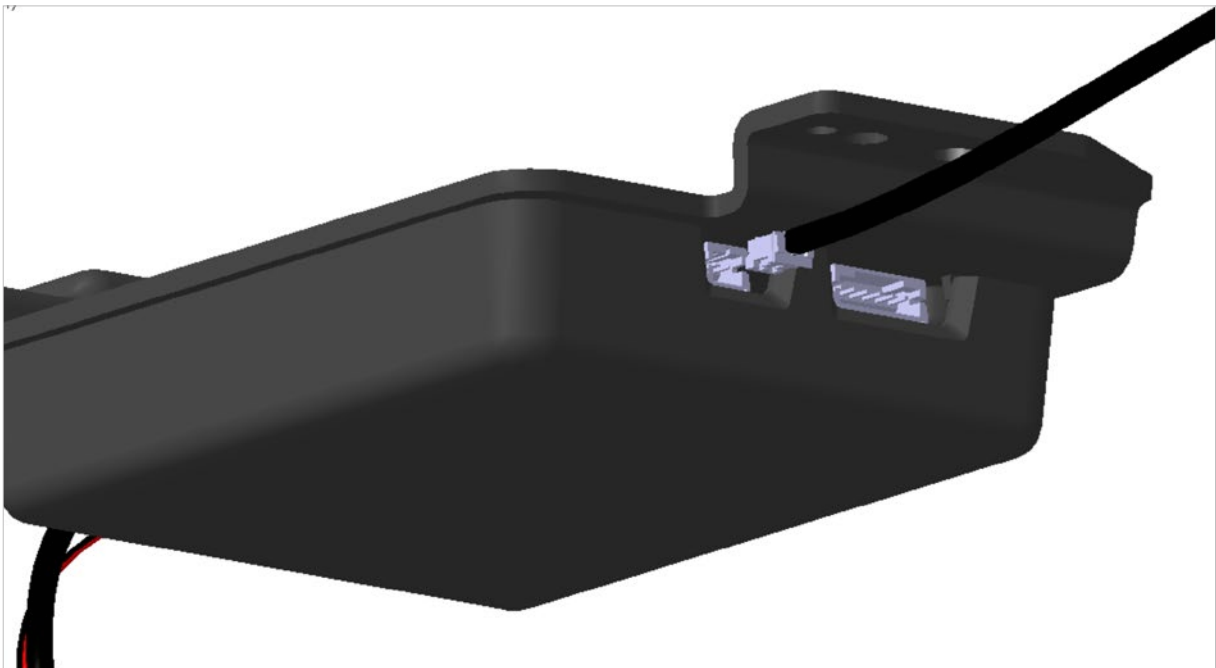
- Plug in the OBD connector of the power harness into the rear socket.
- Plug in the wiring loom of the driver's side exciter into the front socket.



8. On the right, pass the wiring loom of the passenger side exciter in the clip.



9. Then, plug it on the right side of the electronic box.



Preview of the final result of the wiring looms connection to the electronic box.



CAUTION BEFORE USE

Wait 1 hour before using the SOUND 6TEM after the installation to ensure the exciters are properly secured.



AND NOW ?

WE CONNECT !

1

Start the car.

2

Connect the Bluetooth on your device.

3

Play your music !

ANY QUESTIONS?

CONTACT OUR CUSTOMER SERVICE

SAV@SOUND-6TEM.COM

SOUND
6TEM